

TECHNICAL MANUAL

**ORGANIZATIONAL, DIRECT SUPPORT, AND GENERAL SUPPORT
MAINTENANCE REPAIR PARTS AND SPECIAL TOOLS LISTS
(INCLUDING DEPOT MAINTENANCE REPAIR PARTS AND SPECIAL TOOLS)**

FOR

**MAINTENANCE KIT,
OPTICAL ALIGNMENT MK-1144/TAQ-1B
(NSN 5895-00-402-5311)**

AND

**MAINTENANCE KIT,
ELECTRONIC EQUIPMENT MK-1145/TAQ-1B
(NSN 5895-00-402-5302)**

HEADQUARTERS, DEPARTMENT OF THE ARMY

JULY 1977

CHANGE }
N o . 1 }

HEADQUARTERS
DEPARTMENT OF THE ARMY
WASHINGTON, DC, 10 Aug 1978

**ORGANIZATIONAL, DIRECT SUPPORT, AND GENERAL SUPPORT
MAINTENANCE REPAIR PARTS AND SPECIAL TOOLS LISTS
(INCLUDING DEPOT MAINTENANCE REPAIR PARTS AND SPECIAL TOOLS)
FOR
MAINTENANCE KIT, OPTICAL ALIGNMENT MK-1144/TAQ-1B
(NSN 5895-00-402-5311)
AND
MAINTENANCE KIT, ELECTRONIC EQUIPMENT MK-1145/TAQ-1B
(NSN 5895-00-402-5302)**

TM 11-6625-2392-24P, 1 July 1977, is changed as follows

- 1 New or changed material is indicated by a vertical bar in the margin of the page.
- 2 The action change code "C" appearing in the margin of the repair parts list indicates a change in data
- 3 Remove and insert pages as indicated below.

Remove
13 and 14 / (15 blank)
23 through 25 / (26 blank)

Insert
13 and 14 / (15 blank)
23 through 25 / (26 blank)

- 4 File this change sheet in front of the publication for reference purposes.

TECHNICAL MANUAL }
 No. 11-6625-2392-24P

HEADQUARTERS
 DEPARTMENT OF THE ARMY
 WASHINGTON, D C , 1 July 1977

**ORGANIZATIONAL, DIRECT SUPPORT, AND GENERAL SUPPORT MAINTENANCE
 REPAIR PARTS AND SPECIAL TOOLS LISTS
 (INCLUDING DEPOT MAINTENANCE REPAIR PARTS AND SPECIAL TOOLS)
 FOR
 MAINTENANCE KIT, OPTICAL ALIGNMENT MK-1144/TAQ-1B
 (NSN 5895-00-402-5311)
 AND
 MAINTENANCE KIT, ELECTRONIC EQUIPMENT MK-1145/TAQ-1B
 (NSN 5895-00-402-5302)**

Current as of 9 March 1977

REPORTING OF ERRORS

You can improve this manual by recommending improvements using DA Form 2028-2 (Test) located in the back of the manual. Simply tear out the self-addressed form, fill it out as shown on the sample, fold it where shown, and drop it in the mail.

If there are no blank DA Form 2028-2 (Test) in the back of your manual, use the standard DA Form 2028 (Recommended Changes to Publications and Blank Forms) and forward to the Commander, US Army Electronics Command, ATTN: P&SEL-MA-Q, Fort Monmouth, New Jersey 07703

In either case a reply will be furnished direct to you.

Table of Contents

		Page	Page
SECTION I.	Introduction	1	
II.	Repair parts lists	1	
Group 00	Maintenance Kit Optical Alignment MK-1144/TAQ-1B	1	
01	RT connector optical alignment target	1	
02	Data base fixture	1	
03	Maintenance fixture assembly	1	
04	Maintenance mounting assembly	1	
05	Transfer base alignment fixture	1	
06	Mirror adjustment assembly	1	
07	Maintenance Kit Electronic MK-1145/TAQ-1B	1	
08	RT connector optical equipment target A1 base layout kit for parts	1	
09	Maintenance fixture assembly A2 base layout kit for parts	1	
10	Maintenance mounting assembly A3 base layout kit for parts	1	
SECTION III.	Approved tools lists and applications		
IV.	Approved special equipment and parts requisition cards		

*This technical publication is a result of DA Form 11-6625-2392-24P 15 July 1977. In-Field Copy (Version 1.0) Supersedes 1977. Do not return to request parts and technical repair data.

By Order of the Secretary of the Army

BERNARD W ROGERS
General United States Army
Chief of Staff

Official

J C PENNINGTON
Brigadier General, United States Army
The Adjutant General

Distribution

To be distributed in accordance with DA Form 12-36, organizational maintenance requirements for AN TAQ-1

SECTION I INTRODUCTION

1. Scope

This manual lists spares and repair parts, special tools, special test, measurement, and diagnostic equipment (TMDE), and other special support equipment required for performance of direct support and general support maintenance of the MK-1144/TAQ-1B and MK-1145/TAQ-1B. It authorizes the requisitioning and issue of spares and repair parts as indicated by the source and maintenance codes.

2. General

This Repair Parts and Special Tools List is divided into the following sections:

a Section II Repair Parts List A list of spares and repair parts authorized for use in the performance of maintenance. The list also includes parts which must be removed for replacement of the authorized parts. Parts lists are composed of functional groups in numeric sequence, with the parts in each group listed in figure and item number sequence.

b Section III Special Tools List Not applicable.

c Section IV National Stock Number and Part Number Index A list, in National item identification number (NIIN) sequence, of all National stock numbers (NSN) appearing in the listings, followed by a list, in alphabetic sequence, of all part numbers appearing in the listings. National stock numbers and part numbers are cross-referenced to each illustration figure and item number appearance.

3. Explanation of Columns

a Illustration This column is divided as follows:

- (1) *Figure number* Indicates the figure number of the illustration on which the item is shown.
- (2) *Item number* The number used to identify item called out in the illustration.

b Source, Maintenance, and Recoverability (SMR) Codes

(1) *Source code* Source codes indicate the manner of acquiring support items for maintenance, repair, or overhaul of end items. Source codes are entered in the first and second positions of the Uniform SMR Code format as follows:

<i>Code</i>	<i>Definition</i>
PA	Item procured and stocked for anticipated or known usage.
XD	A support item that is not stocked. When required, item will be procured through normal supply channels.

NOTE

Cannibalization or salvage may be used as a source of supply for any items source coded above except those coded XA and aircraft support items as restricted by AR 700-42.

(2) *Maintenance code* Maintenance codes are assigned to indicate the levels of maintenance authorized to USE and REPAIR support items. The maintenance codes are entered in the third and fourth positions of the Uniform SMR Code format as follows:

(a) The maintenance code entered in the third position will indicate the lowest maintenance level authorized to remove, replace, and use the support item. The maintenance code entered in the third position will indicate one of the following levels of maintenance:

<i>Code</i>	<i>Application/Explanation</i>
O	Support item is removed, replaced, used at the organizational level.
H	Support item is removed, replaced, used at the general support level.

(b) The maintenance code entered in the fourth position indicates whether the item is to be repaired and identifies the lowest maintenance level with the capability to perform complete repair (i.e., all authorized maintenance functions). This position will contain one of the following maintenance codes:

<i>Code</i>	<i>Application/Explanation</i>
O	The lowest maintenance level capable of complete repair of the support item is the organizational level.
H	The lowest maintenance level capable of complete repair of the support item is the general support level.
Z	Nonreparable. No repair is authorized.

(3) *Recoverability code* Recoverability codes are assigned to support items to indicate the disposition action on unserviceable items. The recoverability code is entered in the fifth position of the Uniform SMR Code format as follows:

Recoverability codes

Definition

- Z—Nonreparable item. When unserviceable, condemn and dispose at the level indicated in position 3.
 O—Reparable item. When uneconomically reparable, condemn and dispose at the organizational level
 H—Reparable item. When uneconomically reparable, condemn and dispose at the general support level

c National Stock Number Indicates the National stock number assigned to the item and will be used for requisitioning purposes

d Part Number Indicates the primary number used by the manufacturer (individual, company, firm, corporation, or Government activity), which controls the design and characteristics of the item by means of its engineering drawings, specifications, standards, and inspection requirements to identify an item or range of items

NOTE

When a stock numbered item is requisitioned, the repair part received may have a different part number than the part being replaced.

e Federal Supply Code for Manufacturer (FSCM) The FSCM is a 5-digit numeric code listed in SB 708-42 which is used to identify the manufacturer, distributor, or Government agency, etc.

f Description Indicates the Federal item name and, if required, a minimum description to identify the item.

g Unit of Measure (U/M) Indicates the standard of the basic quantity of the listed item as used in performing the actual maintenance function. This measure is expressed by a two-character alphabetical abbreviation (e.g.; ea, in, pr, etc). When the unit of measure differs from the unit of issue, the lowest unit of issue that will satisfy the required units of measure will be requisitioned.

h Quantity Incorporated in Unit Indicates the

quantity of the item used in the breakout shown on the illustration figure, which is prepared for a functional group, subfunctional group, or an assembly

4. Special Information

The following publication pertains to th MK-1144/TAQ-1B and MK-1145/TAQ-1B and its components: TM 11-6625-2392-15, Maintenance Kit, Optical Alignment MK-1144/TAQ-1B and Maintenance Kit, Electronic Equipment MK-1145/TAQ-1B

5. How to Locate Repair Parts

a When National stock number or part number is unknown.

(1) *First* Using the table of contents, determine the functional group within which the item belongs. This is necessary since illustrations are prepared for functional groups and listings are divided into the same groups

(2) *Second* Find the illustration covering the functional group to which the item belongs

(3) *Third* Identify the item on the illustration and note the illustration figure and item number of the item.

(4) *Fourth* Using the Repair Parts Listing, find the figure and item number noted on the illustration.

b When National stock number or part number is known.

(1) *First* Using the Index of National Stock Numbers and Part Numbers, find the pertinent National stock number or part number. This index is in N11N sequence followed by a list of part numbers in alphabetic sequence, cross-referenced to the illustration number and item number

(2) *Second* After finding the figure and item number, locate the figure and item number in the repair parts list

6. Abbreviations

Not applicable.

(Next printed page is 4)

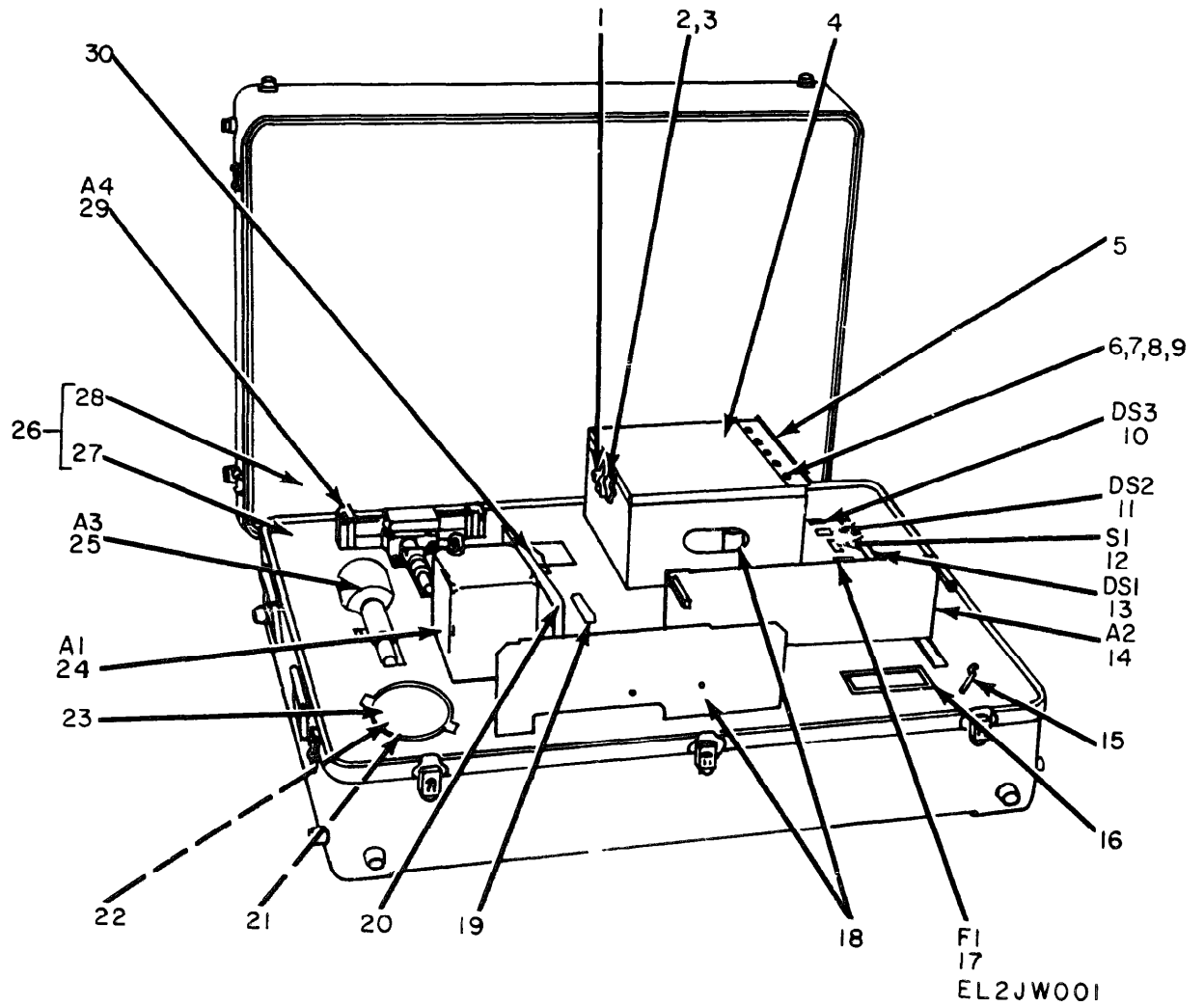


Figure 1. Maintenance Kit, Optical Alignment MK-1144/TAQ-1B.

SECTION II

TM 11-6625-2392-24P

(1)	(2)	(3)	(4)	(5)	(6)	(7)	(8)
ILLUSTRATION		SMR CODE	NATIONAL STOCK NUMBER	PART NUMBER	FSCM	DESCRIPTION	QTY INC IN UNIT
(8) FIG NO	(7) ITEM NO						
GROUP 00. MAINTENANCE KIT, OPTICAL ALIGNMENT MK-1144/TAQ-16							
1	1 PAOZZ	5340-00-797-9955	NO3		82240	FASTENER, POSITIVE LOCK	EA 1
1	2 XDOZZ		MS24615-6		96906	SCREW, TAPPING, THREAD FORMING	EA 2
1	3 XDOZZ	5310-00-782-1349	MS15795-804		96906	WASHER, FLAT	EA 2
1	4 XDOHH		600129		99592	CONTAINER, OPTICAL DEPTH MICROMETER	EA 1
1	5 XDOZZ		600132		99592	HINGE, MODIFIED	EA 1
1	6 XDOZZ		MS39649-304		96906	NUT, PLAIN, HEXAGON	EA 10
1	7 XDOZZ	5305-00-059-3660	MS51958-64		96906	SCREW, MACHINE	EA 10
1	8 XDOZZ	5310-00-550-5054	MS15795-809		96906	WASHER, FLAT	EA 20
1	9 XDOZZ	5310-00-933-8120	MS39338-138		96906	WASHER, LOCK	EA 10
1	10 PAOZZ	6240-00-155-8714	313		08808	LAMP, INCANDESCENT	EA 1
1	11 PAOZZ	6240-00-682-3411	NE51M		24455	LAMP, GLOW	EA 1
1	12 XDOZZ		W-5-7558-111G		96906	STARTER, FLUORESCENT LAMP	EA 1
1	13 PAOZZ	6240-00-299-7252	F6T5CW		08805	LAMP, FLUORESCENT	EA 1
1	14 XDOHH		87000		99592	DATA BOX FIXTURE	EA 1
1	15 XDOZZ		4215-11		23876	WRENCH, SPANNER	EA 1
1	16 XDOZZ		600145		99592	PLATE	EA 1
1	17 PAOZZ	5920-00-794-3215	513001		75915	FUSE, CARTRIDGE	EA 1
1	18 XDOHH	5895-00-140-7410	86864		99592	TRANSFER LENS ALIGNMENT FIXTURE	EA 1
1	19 PAOZZ	5895-00-141-0050	87819		99592	HOLDER, SENSING ARM	EA 1
1	20 XDOZZ		87842		99592	HOOK, ADJUSTING	EA 1
1	21 PAOZZ	6760-00-807-1833	MS26565-8		96906	SPOOL, PHOTOGRAPHIC	EA 1
1	22 PAOZZ	6770-00-147-2516	87878		99592	NEGATIVE, TEST FILM	EA 1
1	23 XDOZZ		51NXL50FT		19139	CAN, PHOTOGRAPHIC FILM STORAGE	EA 1
1	24 PAOHH	5895-00-141-0052	87832		99592	CRT SIMULATOR OPTICAL ALIGNMENT TARGET	EA 1
1	25 XDOHH		600095		99592	MICROSCOPE FIXTURE ASSEMBLY	EA 1
1	26 XDOZZ	5895-00-141-0047	600194		99592	CASE, TRANSIT	EA 1
1	27 XDOZZ		600195-2		99592	INSERT, TRANSIT CASE BOTTOM	EA 1
1	28 XDOZZ		600195-1		99592	INSERT, TRANSIT CASE TOP	EA 1
1	29 PAOHH	5895-00-140-7409	86760		99592	MICROSCOPE MOUNTING ASSEMBLY	EA 1
1	30 XDOHH		87776		99592	MIRROR ADJUSTMENT ASSEMBLY	EA 1

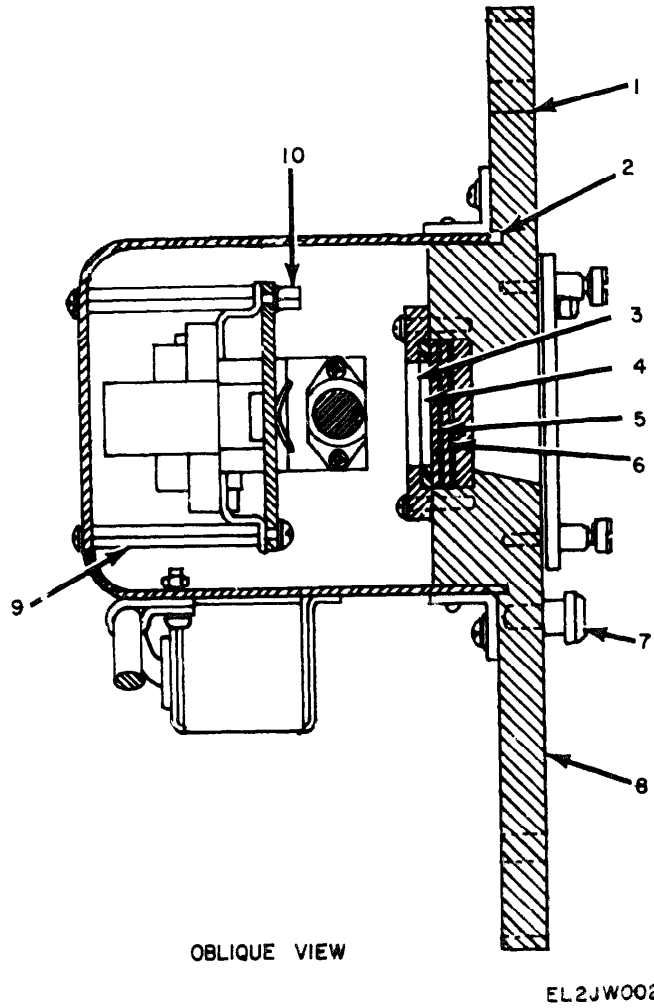


Figure 2. CRT Simulator Optical Alignment Target (Sheet 1 of 2).

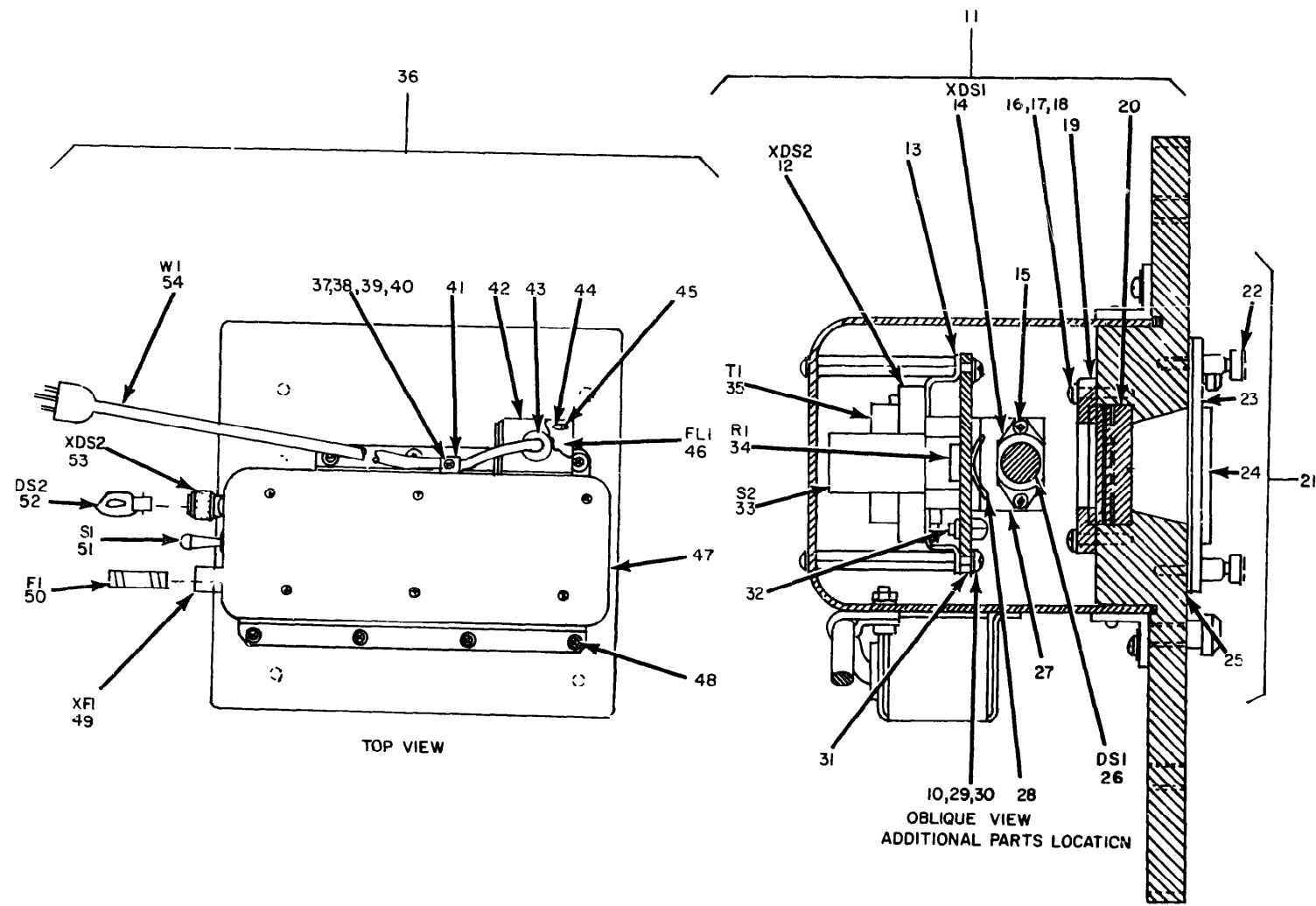


Figure 2. CRT Simulator Optical Alignment Target (Sheet 2 of 2).

EL2JW003

SECTION II

TM 11-6625-2392-24P

(1)	(2)	(3)	(4)	(5)	(6)	(7)	(8)
ILLUSTRATION					DESCRIPTION		QTY
(A) FIG NO	(B) ITEM NO	SMR CODE	NATIONAL STOCK NUMBER	PART NUMBER	FSCM	QTY INC IN UN	QTY INC IN UN
GROUP 01 CRT SIMULATOR OPTICAL ALIGNMENT							
TARGET							
2	1	XDHZZ		6301CSS0632	06540	INSERT, SCREW THREAD	EA 4
2	2	PAHZZ	5330-00-168-5890	430-032	99592	GASKET, RADIO FREQUENCY INTERFERENCE	EA 1
2	3	PAHZZ	5330-00-168-5892	87726	99592	GASKET	EA 1
2	4	PAHZZ	6625-00-180-5825	8775F	99592	FILTER, NEUTRAL	EA 1
2	5	PAHZZ	5330-00-168-5891	87725	99592	GASKET	EA 2
2	6	PAHZZ	6625-00-421-0621	87756	99592	FILTER, BLUE	EA 1
2	7	XDHZZ		85905	99592	BOLT, SHOULDER	EA 2
2	8	PAHZZ	5895-00-140-7412	37734	99592	PLATE, ALIGNMENT	EA 1
2	9	XDHZZ		8233-55-0632	06540	NUT, SLEEVE	EA 6
2	10	XDHZZ	5310-00-934-9748	MS35649-244	96906	NUT, PLAIN, HEXAGON	EA 2
2	11	XDHMM		87759	99592	PLATE ASSEMBLY	EA 1
2	12	PAHZZ	6250-00-295-2738	MIL-L97013	96906	SOCKET, LAMP STARTER	EA 1
2	13	XDHZZ		87729	99592	BRACKET, MOUNTING	EA 1
2	14	XDHZZ		MIL-L97010A	96906	LAMP HOLDER	EA 1
2	15	XDHZZ	5305-00-054-5647	MS51957-13	96906	SCREW, MACHINE	EA 20
2	16	XDHZZ	5305-00-054-6653	MS51957-29	96906	SCREW, MACHINE	EA 32
2	17	PAHZZ	5310-00-225-5328	MS15795-841	96906	WASHER, FLAT	EA 8
2	18	XDHZZ	5310-00-929-6395	MS35338-136	96906	WASHER, LOCK	EA 32
2	19	XDHZZ		87730	99592	SUPPORT, TARGET	EA 1
2	20	PAHZZ	5895-00-140-7413	87689	99592	PLATE, TARGET	EA 1
2	21	XDHMM		87758	99592	COVER ASSEMBLY	EA 1
2	22	PAHZZ	5305-00-443-5884	61395S0632	06540	SCREW, EXTERNALLY RELIEVED BODY	EA 4
2	23	XDHZZ		87733	99592	COVER	EA 1
2	24	XDHZZ		89352	99592	PLATE, INSTRUCTION	EA 1
2	25	XDHZZ		87732	99592	GASKET	EA 1
2	26	PAOZZ	6240-00-299-7252	F6T9CW	98805	LAMP, FLUORESCENT	EA 1
2	27	XDHZZ		87728	99592	BRACKET, MOUNTING	EA 2
2	28	PAHZZ	6230-00-138-8610	87727	99592	REFLECTOR	EA 1
2	29	XDHZZ	5305-00-054-5648	MS51957-14	96906	SCREW, MACHINE	EA 4
2	30	XDHZZ	5310-00-933-8118	MS35338-135	96906	WASHER, LOCK	EA 14
2	31	XDHZZ		87757	99592	PLATE	EA 1
2	32	XDHZZ	5940-00-812-8152	3650-1	71279	TERMINAL, STUD	EA 10
2	33	XDHZZ		MS7558 III 13G	96906	STARTER, FLUORESCENT	EA 1
2	34	PAHZZ	5905-00-254-9201	RC20GF473J	81345	RESISTOR, FIXED, COMPOSITION	EA 1
2	35	PAHZZ	6250-00-295-2735	116377-45-001	31349	BALLAST, LAMP	EA 1
2	36	XDHMM		89351	99592	COVER, LIGHT ASSEMBLY	EA 1
2	37	XDHZZ	5310-00-934-9759	MS35649-284	96906	NUT, PLAIN, HEXAGON	EA 1
2	38	XDHZZ		MS19957-12	96906	SCREW, MACHINE	EA 1

SECTION II

TM 11-6625-2392-24P

(1) ILLUSTRATION		(2)	(3)	(4)	(5)	(6)	(7)	(8)
(a) FIG NO	(b) ITEM NO	SMR CODE	NATIONAL STOCK NUMBER	PART NUMBER	FSCM	DESCRIPTION	U.S. ABN CODE	QTY INC IN UNIT
2	39	XDHZZ	5310-00-880-5978	MS15795-807	96906	WASHER, FLAT		EA 1
2	40	XCHZZ	5310-00-933-8119	MS35338-137	96906	WASHER, LOCK		EA 1
2	41	XDHZZ		MS25281-5	96906	CLAMP, LOOP		EA 1
2	42	XDHZZ		89350	99592	COVER, PROTECTIVE		EA 1
2	43	PAHZZ	5325-00-836-8320	MS35490-9	96906	GROMMET, RUBBER		EA 1
2	44	XDHZZ	5940-00-960-9028	1410-4	83330	TERMINAL, LUG		EA 1
2	45	XDHZZ	5305-00-054-6671	MS51957-46	96906	SCREW, MACHINE		EA 1
2	46	XDHZZ		1JX175	56289	FILTER, RADIO FREQUENCY INTERFERENCE		EA 1
2	47	XDHZZ		87731	99592	COVER, LIGHT		EA 1
2	48	XDHZZ		MS15957-14	96906	SCREW, MACHINE		EA 8
2	49	PAHZZ	5920-00-556-0144	FHN20G	81349	FUSEHOLDER		EA 1
2	50	PAHZZ	5920-00-794-3215	313002	75915	FUSE, CARTRIDGE		EA 1
2	51	PAHZZ	5930-00-811-4663	MS24658-23D	96906	SWITCH, TOGGLE		EA 1
2	52	PAHZZ	6240-00-682-3411	NE51H	24455	LAMP, GLOW		EA 1
2	53	PAHZZ	6210-00-686-4999	MS25331-2	96906	LIGHT, INDICATOR		EA 1
2	54	PAHZZ	6150-00-124-7247	616	92194	CABLE, POWER, ELECTRICAL		EA 1

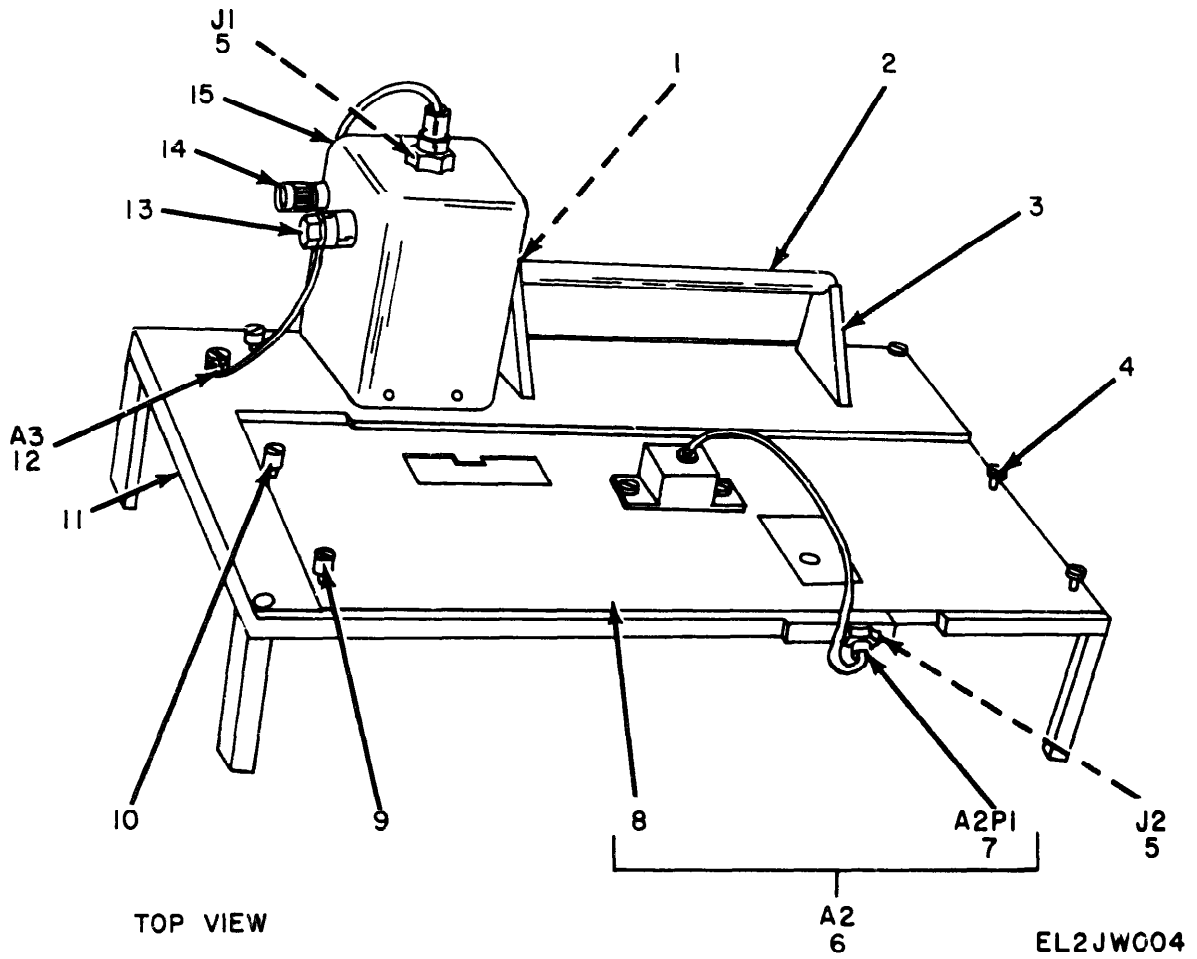


Figure 3. Data Box Figure (Sheet 1 of 2).

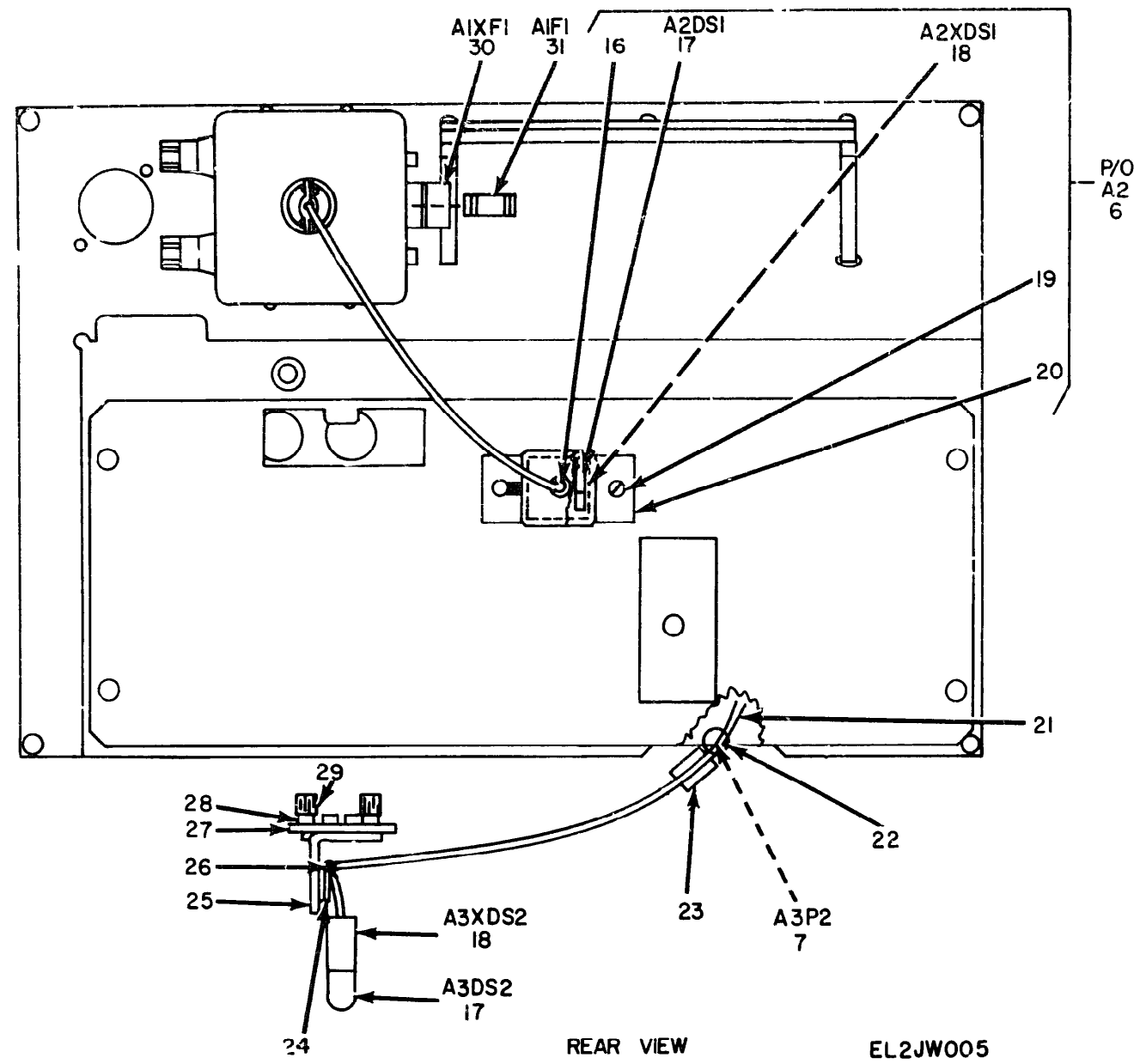
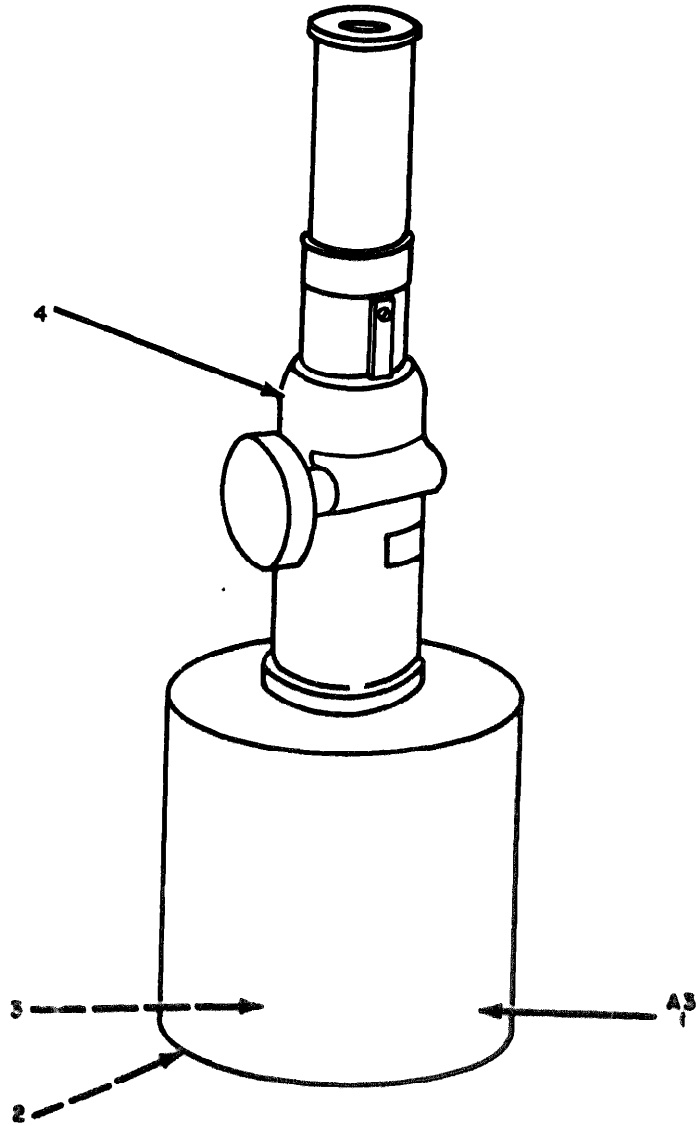


Figure 3. Data Box Fixture (Sheet 2 of 2).

SECTION II

(1)		(2)	(3)	(4)	(5)	(6)	(7)	(8)
ILLUSTRATION		SMR CODE	NATIONAL STOCK NUMBER	PART NUMBER	FSCM	DESCRIPTION	U/M	QTY INC IN UNIT
(a) FIG NO	(b) ITE A NO							
GROUP 02 DATA BOX FIXTURE								
3	1	XDHZZ	600181		99992	GASKET	EA	1
3	2	XDHZZ	600183		99992	GLASS, FROSTED	EA	1
3	3	XDHZZ	87036		99992	BRACE, CORNER	EA	2
3	4	PAHZZ	5305-00-182-7084	6103SS0440	06540	SCREW, EXTERNALLY RELIEVED BODY	EA	4
3	5	PAHZZ	5935-00-257-7579	M4SLRN	81312	CONNECTOR, RECEPTACLE, ELECTRICAL	EA	2
3	6	XDHZZ	600179		99992	COVER ASSEMBLY	EA	1
3	7	PAHZZ	5935-00-503-8645	M4P-LS	81312	CONNECTOR, PLUG, ELECTRICAL	EA	1
3	8	XDHZZ	600178		99992	PLATE, ACCESS	EA	1
3	9	XDHZZ	625D-SS0832		06540	RETAINER, SCREW	EA	2
3	10	XDHZZ	6251D-SS0632		06540	RETAINER, SCREW	EA	2
3	11	XDHZZ	600174		99992	PLATE, BASE, DATA BOX	EA	1
3	12	XDHZZ	5895-00-141-0048	600186	99992	TEST LAMP ASSEMBLY	EA	1
3	13	PAHZZ	5940-00-269-2219	257BLACK	83330	POST, BINDING	EA	1
3	14	PAHZZ	5940-00-356-2493	257RED	83330	POST, BINDING	EA	1
3	15	XDHZZ	5895-00-141-0049	600169	99992	CAN ASSEMBLY	EA	1
3	16	PAHZZ	5325-00-286-6047	MS35489-1	96906	GROMMET, RUBBER	EA	1
3	17	PAHZZ	6240-00-155-8714	313	08808	LAMP, INCANDESCENT	EA	2
3	18	PAHZZ	6250-00-109-1041	7-08	72619	LAMPHOLDER	EA	2
3	19	XDHZZ	6250B-SS0440		06540	RETAINER, SCREW	EA	2
3	20	XDHZZ	600177		99992	COVER, LAMP	EA	1
3	21	XDHZZ	MIL-1230532		96906	INSULATION SLEEVING, ELECTRICAL	EA	19
3	22	PAHZZ	5935-00-258-1757	H19C	81312	SHIELD, CONNECTOR	EA	1
3	23	XDHZZ	MIL-123053		96906	INSULATION SLEEVING, ELECTRICAL	EA	19
3	24	XDHZZ	18-5B		99992	CLAMP, LOOP	EA	1
3	25	XDHZZ	600184		99992	BRACKET, ANGLE	EA	1
3	26	XDHZZ	5315-00-291-5471	MS16562-109	96906	PIN, SPRING	EA	1
3	27	XDHZZ	600185		99992	PLATE, ACCESS	EA	1
3	28	XDHZZ	6100SS0440		06540	SCREW, EXTERNALLY RELIEVED BODY	EA	2
3	29	XDHZZ	6250C-SS0440		06540	RETAINER, SCREW	EA	2
3	30	PAHZZ	5920-00-556-0144	FHN20G	81349	FUSEHOLDER	EA	1
3	31	PAHZZ	5920-00-794-3215	313002	75915	FUSE, CARTRIDGE	EA	1



EL2JW006

Figure 4. Microscope Fixture Assembly.

1. ILLUSTRATION			3. MATERIAL			4. PART NUMBER			5. QUANTITY			6. NOTES		
FIG. NO.	VIEW	SCALE	MAT. OR FIN.	SYMBOL	REMARKS	PART NO.	QTY.	UNIT	REVISION	DATE	BY	CHKD.	APP.	
TOP VIEW OF MICROSCOPE FIXTURE ASSEMBLY														
1	FRONT	1:1	6061-T6	Ø 1.500	Ø 1.500	Ø 1.500	Ø 1.500	Ø 1.500	Ø 1.500	Ø 1.500	Ø 1.500	Ø 1.500	Ø 1.500	
2	FRONT	1:1	6061-T6	Ø 1.500	Ø 1.500	Ø 1.500	Ø 1.500	Ø 1.500	Ø 1.500	Ø 1.500	Ø 1.500	Ø 1.500	Ø 1.500	
3	FRONT	1:1	6061-T6	Ø 1.500	Ø 1.500	Ø 1.500	Ø 1.500	Ø 1.500	Ø 1.500	Ø 1.500	Ø 1.500	Ø 1.500	Ø 1.500	
4	FRONT	1:1	6061-T6	Ø 1.500	Ø 1.500	Ø 1.500	Ø 1.500	Ø 1.500	Ø 1.500	Ø 1.500	Ø 1.500	Ø 1.500	Ø 1.500	

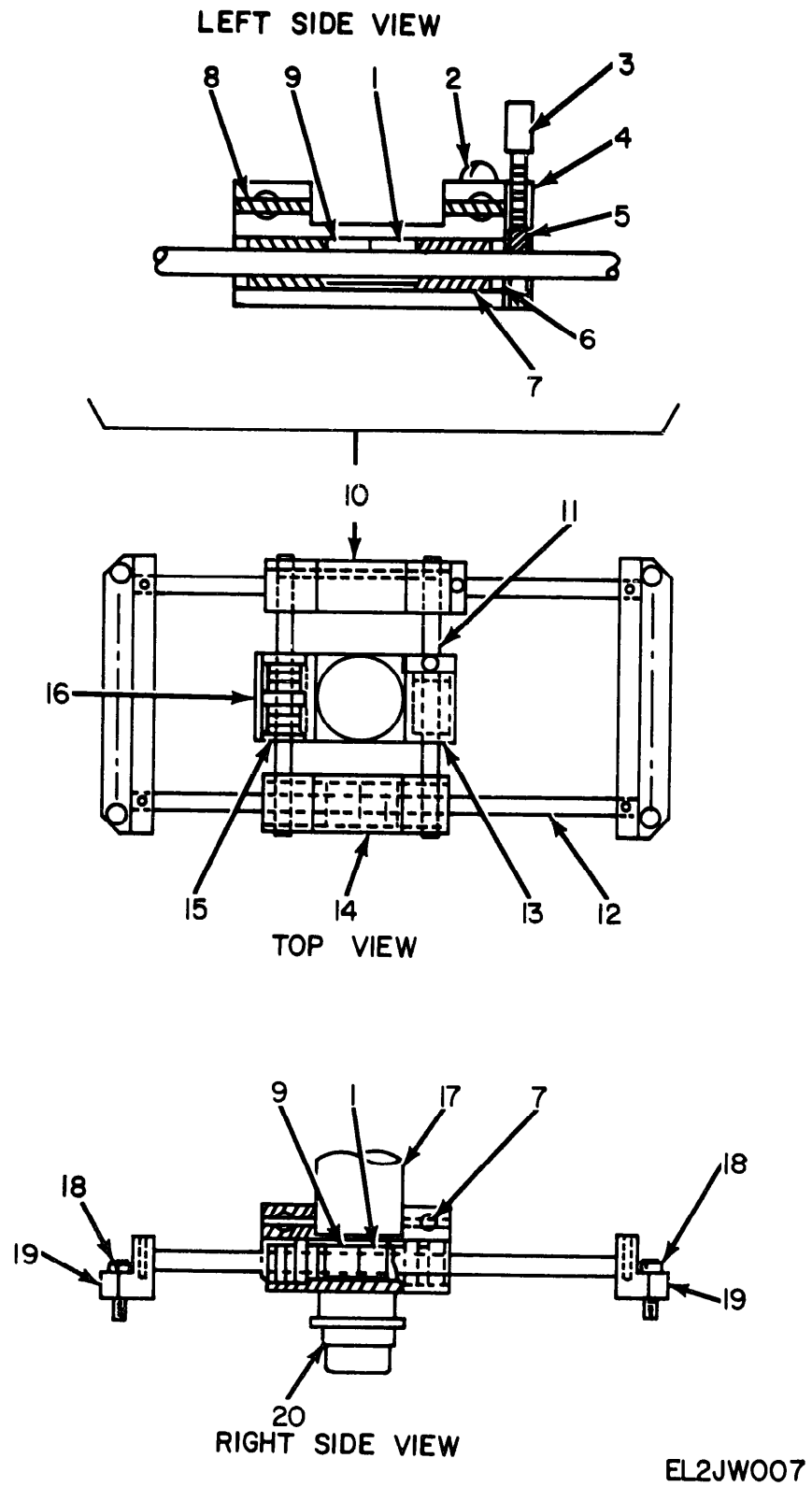
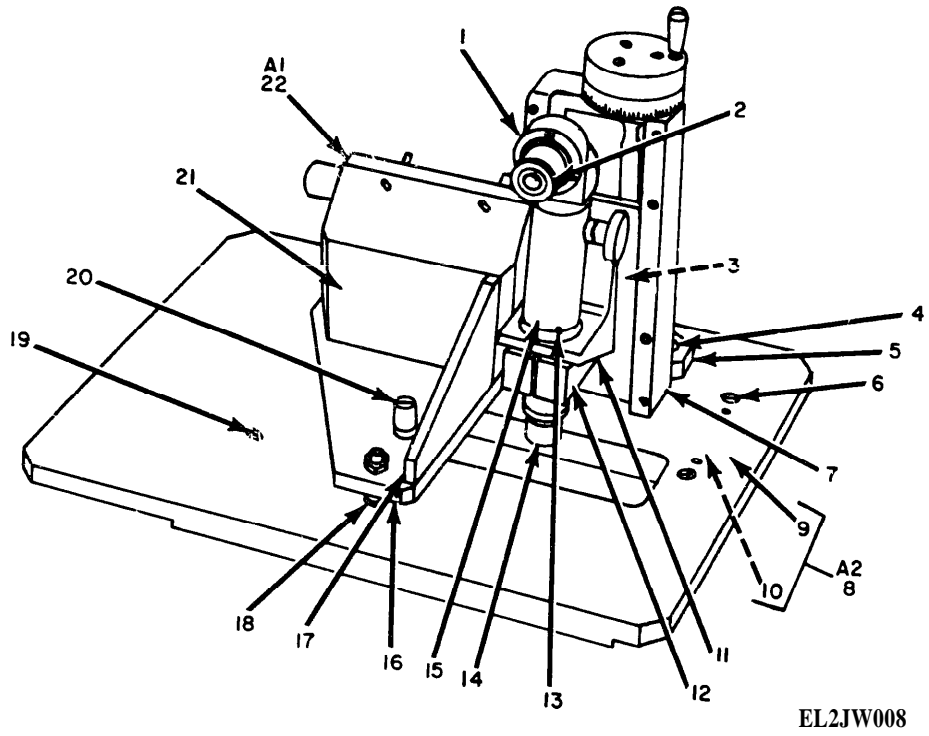


Figure 5. Microscope Mounting Assembly.

SECTION II

TM 11-6625-2392-24P

(1) ILLUSTRATION		(2)	(3)	(4)	(5)	(6) DESCRIPTION	(7)	(8)
(B) FIG NO	(D) ITEM NO	BMR CODE	NATIONAL STOCK NUMBER	PART NUMBER	FBCM		QTY INC IN UNIT	U M
						USABLE ON CODE		
GROUP 04 MICROSCOPE MOUNTING ASSEMBLY								
5	1	XDHZZ	88-14		00141	SPACER, SHAFT	EA	2
5	2	XDHZZ	5305-00-770-2580	MS51959-16	96906	SCREW, MACHINE	EA	4
5	3	XDHZZ		4021	00141	THUMBSCREW	EA	2
5	4	XDHZZ		600113	99592	BRAKE, SUPPORT	EA	2
3	5	PAHZZ	5855-00-130-5732	600112	58250	PAD, PRESSURE	EA	2
5	6	XDHZZ		S290SS	96881	SEAL RING, METAL	EA	8
5	7	XDHZZ		A4812	96881	BEARING, BALL, LINEAR	EA	6
5	8	XDHZZ	5315-00-823-8745	MS16562-215	96906	PIN, SPRING	EA	8
5	9	XDHZZ		88-15	00141	SPACER, SHAFT	EA	2
5	10	XDHZZ		600115	99592	SUPPORT	EA	1
5	11	XDHZZ		600111-2	99592	RAIL	EA	2
5	12	XDHZZ		600111-1	99592	RAIL	EA	2
5	13	XDHZZ		600116	99592	CARRIER, MICROSCOPE	EA	1
5	14	XDHZZ		600114	99592	SUPPORT	EA	1
5	15	PAHZZ	5365-00-857-1960	5005-62	79136	RING, RETAINING	EA	4
5	16	XDHZZ		RSL250	96881	MOUNT, RESILIENT	EA	3
5	17	XDHZZ		M117A	23876	MICROSCOPE	EA	1
5	18	XDHZZ		Y9-6	00141	SCREW, EXTERNALLY RELIEVED BODY	EA	4
5	19	XDHZZ		600117	99592	BRACKET, ANGLE	EA	2
5	20	PAHZZ	6650-00-150-1746	M225C	23876	OBJECTIVE, MICROSCOPE	EA	1



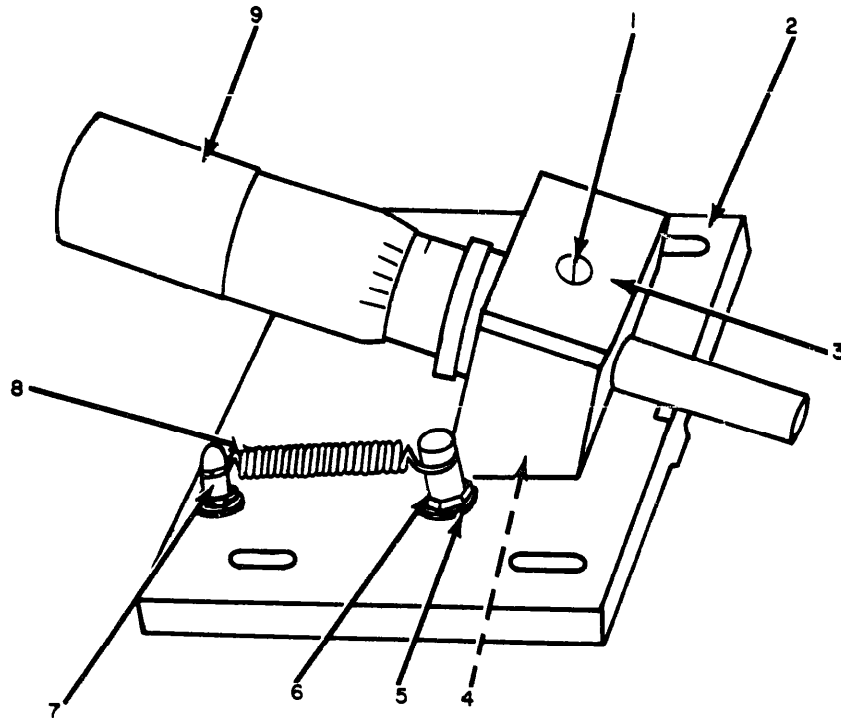
EL2JW008

Figure 6. Transfer Lens Alignment Fixture.

SECTION II

TM 11-6625-2392-24P

(1) ILLUSTRATION		(2)	(3)	(4)	(5)	(6) DESCRIPTION	(7)	(8)
(a) FIG NO	(b) ITEM NO	SMR CODE	NATIONAL STOCK NUMBER	PART NUMBER	FSCM		QTY U M	U N I T
GROUP 05 TRANSFER LENS ALIGNMENT FIXTURE								
6	1	XDHZZ		86306	99592	CLAMP,EYEPiece	EA	1
6	2	PAHZZ	6650-00-139-4854	M194	23876	EYEPiece,MICROSCOPE	EA	1
6	3	PAHZZ	5310-00-150-3884	86304	99592	RING,RETAINING	EA	1
6	4	XDHZZ		86302	99592	LEG,FIXED	EA	1
6	5	XDHZZ		86300	99592	PLATE,SUPPORT	EA	1
6	6	XDHZZ	5305-00-054-6680	MS51957-53	96906	SCREW,MACHINE	EA	4
6	7	PAHZZ	6650-00-920-0332	M303A	23876	SLIDE,MICROMETER	EA	1
6	8	XDHHH		86948	99592	PLATE ASSEMBLY,TRANSFER LENS ALIGNMENT	EA	1
6	9	PAHZZ	5895-00-140-7445	86872	99592	PLATE,TRANSFER LENS ALIGNMENT	EA	1
6	10	PAHZZ	5365-00-168-6701	86865	99592	SPACER	EA	2
6	11	PAHZZ	5895-00-140-7425	86287	99592	ADAPTOR,MICROSCOPE MOUNTING	EA	1
6	12	XDHZZ		86305	99592	CLAMP,MICROSCOPE	EA	1
6	13	XDHZZ		MS16562-35	96906	PIN,SPRING	EA	1
6	14	XDHZZ		M218	23876	LENS,OBJECTIVE	EA	1
6	15	XDHZZ		M117A	23876	MICROSCOPE	EA	1
6	16	XDHZZ		86297	99592	PLATE,MCOUNTING	EA	1
6	17	XDHZZ		86299	99592	PLATE,SUPPORT	EA	1
6	18	PAHZZ	5895-00-140-7414	86303	99592	LEG,ADJUSTING	EA	1
6	19	XDHZZ	5305-00-054-5639	MS51957-5	96906	SCREW,MACHINE	EA	4
6	20	XDHZZ		6276ESS2520	06540	RETAINER,SCREW	EA	2
6	21	XDHZZ		86298	99592	BLOCK,MCOUNTING	EA	1
6	22	XDHHH		86295	99592	MICROMETER ASSEMBLY,OPTICAL DEPTH	EA	1



EL2JW009

Figure 7. Mirror Adjustment Assembly.

(1) ILLUSTRATION	(2) (B) FIG NO	(3) (D) ITEM NO	(4) SMR CODE	(5) NAT ONAL STOCK NUMBER	(6) PART NUMBER	(7) FSCM	(8) DESCRIPTION	(9) U/M	(10) QTY INC IN UNIT
GROUP 06 MIRROR ADJUSTMENT ASSEMBLY									
7	1	XDHZZ		MS51981-27		96906	SETSCREW	EA	1
7	2	PAHZZ	5895-00-140-7415	87775		99592	BASE, MIRROR	EA	1
7	3	XDHZZ		87774		99592	BLOCK, MIRROR	EA	1
7	4	XDHZZ	5305-00-054-5649	MS51957-15		96906	SCREW, MACHINE	EA	2
7	5	PAHZZ	5310-00-933-8119	MS39338-137		96906	WASHER, LOCK	EA	4
7	6	XDHZZ		87773		99592	PIN, SPRING MOUNTING	EA	2
7	7	XDHZZ		87772		99592	PIN, SPRING MOUNTING	EA	2
7	8	XDHZZ		LE03LC2		84830	SPRING, EXTENSION	EA	2
7	9	PAHZZ	5210-00-150-2853	663L		57163	MICROMETER HEAD	EA	1

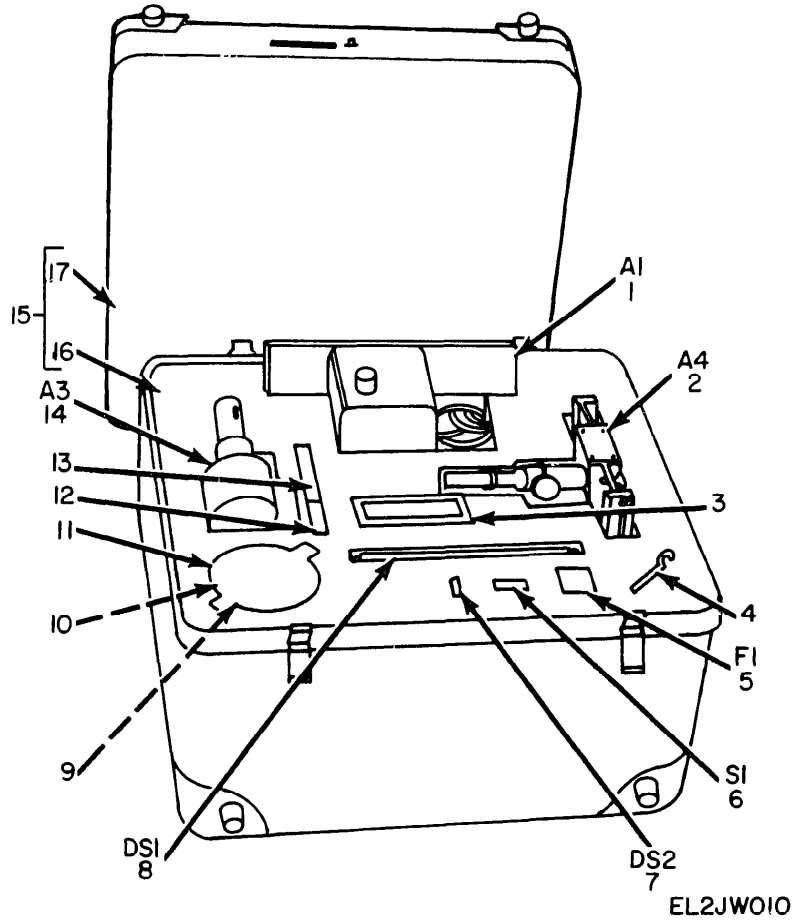


Figure 8. Maintenance Kit, Electronic MK-1145/TAQ-1B.

SECTION II

TM 11-6625-2392-24P

(1) ILLUSTRATION		(2)	(3)	(4)	(5)	(6)	(7)	(8)
(a) FIG NC	(b) ITEM NO	SMR CODE	NATIONAL STOCK NUMBER	PART NUMBER	FSCM	DESCRIPTION	USABLE ON CODE	QTY INC IN UNIT
GROUP 07 MAINTENANCE KIT, ELECTRONIC MK-1145TAQ-1B								
8	1	PA0HH	5895-00-141-0052	87832	99592	CRT,SIMULATOR OPTICAL ALIGNMENT TARGET		EA 1
8	2	PA0HH	5895-00-140-7409	86760	99592	MICROSCOPE MOUNTING ASSEMBLY		EA 1
8	3	XDOZZ		600145	99592	PLATE		EA 1
8	4	XDOZZ		4215-11	23876	WRENCH,SPANNER		EA 1
8	5	PAOZZ	5920-00-057-2979	313002	75915	FUSE,CARTRIDGE		EA 1
8	6	XDOZZ		W-S-7558-III-3G	96906	STARTER,FLOURESCENT		EA 1
8	7	PAOZZ	6240-00-682-3411	NE51H	24455	LAMP,GLOW		EA 1
8	8	PAOZZ	6240-00-299-7252	F6T5/CW	08805	LAMP,FOURESCENT		EA 1
8	9	XDOZZ	6760-00-807-1833	MS26565-8	96906	SPOOL,PHOTOGRAPHIC FILM		EA 1
8	10	PAOZZ	6770-00-147-2516	87878	99592	NEGATIVE TEST FILM		EA 1
8	11	XDOZZ		51NX15FT	19139	CAN,PHOTOGRAPHIC FILM STORAGE		EA 1
8	12	PAOZZ	5895-00-141-0050	87819	99592	HOLDER,SENSING ARM		EA 1
8	13	XDOZZ		87842	99592	HOOK,ADJUSTING		EA 1
8	14	XDOHH		60095	99592	MICROSCOPE FIXTURE ASSEMBLY		EA 1
8	15	XDO00	5895-00-141-0047	600194	99592	CASE,TRANSIT		EA 1
8	16	XDOZZ		600195-2	99592	INSERT,TRANSIT CASE		EA 1
8	17	XDOZZ		600195-1	99592	INSERT,TRANSIT CASE TOP		EA 1

SECTION IV

NATIONAL STOCK NUMBER AND PART NUMBER INDEX
 TM 11-6625-2392-24P
 NOTE LATEST NATIONAL STOCK NUMBER AND PART NUMBER ASSIGNMENTS ARE INCLUDED AT END OF INDEX

STOCK NUMBER	FIGURE NO	ITEM NO	STOCK NUMBER	FIGURE NO	ITEM NO
5305-00-054-5639	6	19	5305-00-182-7084	3	4
5305-00-054-5647	2	15	5310-00-223-5328	2	17
5305-00-054-5648	2	29	5905-00-254-9201	2	34
5305-00-054-5649	7	4	5935-00-257-7579	3	5
5305-00-054-6653	2	16	593540-258-1757	3	22
5305-00-054-6671	2	45	5940-00-269-2219	3	13
5305-00-054-6680	6	6	5325-00-286-6047	3	16
5305-00-059-3660	1	7	5315-00-291-5471	3	26
6150-00-124-7247	2	54	6250-00-295-2738	2	12
6230-00-138-8610	2	28	5940-00-356-2493	3	14
6650-00-139-4854	6	2	6625-00-421-0621	2	6
5895-00-140-7409	1	29	5935-00-503-8645	3	7
5895-00-140-7409	8	2	5310-00-550-5054	1	8
5895-00-140-7410	1	18	5920-00-556-0144	2	49
5895-00-140-7412	2	8	5920-00-556-0144	3	30
5895-00-140-7413	2	20	6240-00-682-3411	1	11
5895-00-140-7414	6	18	6240-00-682-3411	2	52
5895-00-140-7415	7	2	6240-00-682-3411	8	7
5895-00-140-7475	6	11	6210-00-686-4999	2	53
5895-00-140-7445	6	9	5305-00-770-2580	5	2
5895-00-141-0047	1	26	5310-00-782-1349	1	3
5895-00-141-0047	8	15	5920-00-794-3215	2	50
5895-00-141-0048	3	12	5920-00-794-3215	3	31
5895-00-141-0049	3	15	6760-00-807-1833	1	21
5895-00-141-0050	1	19	6760-00-807-1833	8	9
5895-00-141-0050	8	12	5930-00-811-4663	2	51
5895-00-141-0052	1	24	5940-00-812-8152	2	32
5895-00-141-0052	8	1	5315-00-823-8745	5	8
6770-00-147-2516	1	22	5325-00-836-8320	2	43
6770-00-147-7516	8	10	5310-00-880-5978	2	39
6650-00-150-1746	5	20	6650-00-920-0332	6	7
5210-00-150-2853	7	9	5310-00-929-6395	2	18
5310-00-155-3884	5	3	5310-00-933-8118	2	30
6240-00-155-8714	1	10	5310-00-933-8119	2	40
6240-00-155-8714	3	17	5310-00-933-8119	7	5
5330-00-168-5890	2	2	5310-00-933-8120	1	9
5330-00-168-5891	2	5	5310-00-934-9748	2	10
5330-00-168-5892	2	3	5310-00-934-9759	2	37
5365-00-168-6701	6	10	5940-00-960-9028	2	44
6625-00-180-5825	2	4			

PART NUMBER	FSCM	FIG NO	ITEM NO	PART NUMBER	FSCM	FIG NO	ITEM NO
A4812	96881	5	7	MSS1957-15	96906	7	4
B8-14	00141	5	1	MSS1957-29	96906	2	16
B8-15	00141	5	9	MSS1957-46	96906	2	45
FHN20G	81349	2	49	MSS1957-5	96906	6	19
FHN20G	81349	3	30	MSS1957-53	96906	6	6
F6T5/CW	08805	1	13	MSS1958-64	96906	1	7
F6T5/CW	08805	2	26	MSS1959-16	96906	5	2
F6T5/CW	08805	8	8	MSS1981-27	96906	7	1
H19C	81312	3	22	MS755B113G	96906	2	33
LE031C2	84830	7	8				
MIL-123053	96906	3	23	MI17A	23876	5	17
MIL-1230532	96906	3	21				
MIL-L97010A	96906	2	14	M194	23876	6	2
MIL-L97013	96906	2	12	M218	23876	6	14
MS15795-804	96906	1	3	M220	23876	4	3
MS15795-807	96906	2	39	M225C	23876	5	20
MS15795-809	96906	1	8	M303A	23876	6	7
MS15795-841	96906	2	17	M4P-LS	81312	3	7
MS15957-12	96906	2	38	M4SLRN	81312	3	5
MS15957-12	96906	2	48	NE51H	24455	2	52
MS16562-189	96906	3	26	NE51H	24455	9	7
MS16562-215	96906	5	8	NE51M	24455	1	11
MS1656	96906	6	13	N03	54907	1	1
MS24615-6	96906	1	2	RC20GF473J	81349	2	34
MS24658-230	96906	2	51	RSL250	96881	5	16
MS25	96906	2	41	S250SS	96881	5	6
MS253	96906	2	53				
MS26565-8	96906	1	21	Y9 6	00141	5	18
MS26565-8	96906	2	9	1,19174	96289	2	46
MS35338-135	96906	2	10	1410 4	21149	2	44
MS35338-136	96906	2	18	1410 4	96906	2	4
MS35338-137	96906	2	40	254 110	96906	4	4
MS35338-137	96906	2	5	257BL AT 8	96906	1	13
MS35338-138	96906	1	9	257BL AT 8	53312	3	14
MS35489-1	96906	3	16				
MS35490-9	96906	2	43	313	05003	1	14
MS35649-244	96906	2	10	211	2200 20	2	12
MS35649-284	96906	2	17	213007	7 614	2	17
MS35649-304	96906	1	6	1410 4	2	41	41
MS51957-13	96906	2	15				
MS51957-14	96906	2	29				

SECTION IV

NATIONAL STOCK NUMBER AND PART NUMBER INDEX

TM 11-6625-2392-24P

PART NUMBER	FSCM	FIG NO	ITEM NO	PART NUMBER	FSCM	FIG NO	ITEM NO
4021	00141	5	3	86287	99592	6	11
4215-11	23876	1	15	86295	99592	6	22
4215-11	23876	8	4	86297	99592	6	16
430-032	99592	2	2	86298	99592	6	21
5INX150FT	19139	1	23	86299	99592	6	17
5INX150FT	19139	8	11	86300	99592	6	5
5005-62	79136	5	15	86302	99592	6	4
600095	99592	1	25	86303	99592	6	18
600095	99592	8	14	86304	99592	6	3
600096	39592	4	1	86305	99592	6	12
600111-1	99592	5	12	86306	99592	6	1
600111-2	99592	5	11	86760	99592	1	29
600112	99592	5	5	86760	99592	8	2
600113	99592	5	4	86864	99592	1	18
600114	99592	5	14	86865	99592	6	10
600115	99592	5	10	86872	99592	6	9
600116	99592	5	13	86948	99592	6	8
600117	99592	5	19	87000	99592	1	14
600129	99592	1	4	87036	99592	3	3
600132	99592	1	5	87689	99592	2	20
600145	99592	1	16	87725	99592	2	5
600145	99592	8	3	87726	99592	2	3
600169	99592	3	15	87727	99592	2	28
600174	99592	3	11	87728	99592	2	27
630177	99592	3	20	87729	99592	2	13
600178	99592	3	8	87730	99592	2	19
600179	99592	3	6	87731	99592	2	47
600181	99592	3	1	87732	99592	2	25
600183	99592	3	2	87733	99592	2	23
600184	99592	3	25	87734	99592	2	8
600185	99592	3	27	87755	99592	2	4
600186	99592	3	12	87756	99592	2	6
600194	99592	1	26	87757	99592	2	31
600194	99592	8	15	87758	99592	2	21
600195-1	99592	1	28	87759	99592	2	11
600195-1	99592	8	17	87772	99592	7	7
600195-2	99592	1	27	87773	99592	7	6
605195-2	99592	8	16	87774	99592	7	3
6100SS0440	06540	3	4	87775	99592	7	2
6103SS0440	06540	3	28	87776	99592	1	30
6135SS0632	06540	2	22	87819	99592	1	19
616	92194	2	54	87819	99592	8	12
625D-SS0832	06540	3	9	87832	99592	1	24
6250B-SS0440	06540	3	19	87832	99592	8	1
6250C-SS0440	06540	3	29	87842	99592	1	20
6251D-SS0632	06540	3	10	87842	99592	8	13
6276ESS2520	06540	6	20	87842	99592	1	22
6301CSS0632	06540	2	1	87878	99592	8	10
663L	57163	7	9	89350	99592	2	42
7-08	72619	3	18	89351	99592	2	36
8233-SS-0632	06540	2	9	89352	99592	2	24
35905	06540	2	7				

LATEST NATIONAL STOCK NUMBER ASSIGNMENTS

STOCK NUMBER	FIG NO	ITEM NO
5920-00-057-2479	8	5
6250-00-109-1041	3	18
5855-00-130-5732	5	5
6250-00-295-2735	2	35
	1	13
6240-00-299-7252	2	26
6240-00-799-7252	8	8
1305-00-443-5884	2	22
5920-00-794-3215	1	17
5340-00-797-9955	1	1
5365-00-857-1360	5	15

LATEST PART NUMBER ASSIGNMENTS

PART NUMBER	FSCM	FIG NO	ITEM NO
M117A	23876	1	4
M117A	23876	6	15
M16377-45-001	81349	2	35
W-S-755B-III-3G	96906	1	12
W-S-755B-III-3G	96906	8	6
313001	75915	1	17
313002	75915	8	5

25 / (26 blank)

FILL IN YOUR
UNIT'S ADDRESS

FOLD BACK

DEPARTMENT OF THE ARMY

OFFICIAL BUSINESS

PENALTY FOR PRIVATE USE \$300

POSTAGE AND FEES PAID
DEPARTMENT OF THE ARMY
DOD-314



Commander
US Army Electronics Command
ATTN. DRSEL-MA-Q
Fort Monmouth, New Jersey 07703

FOLD BACK

REVERSE OF DA FORM 2026-2 (TEST)



SOMETHING WRONG WITH THIS MANUAL?

THEN... JOT DOWN THE DOPE ABOUT IT ON THIS FORM, TEAR IT OUT, FOLD IT AND DROP IT IN THE MAIL!

FROM: (YOUR UNIT'S COMPLETE ADDRESS)

Commander
Stateside Army Depot
ATTN: AMSTA-US
Stateside, N.J. 07703

DATE 10 July 1975

PUBLICATION NUMBER

TM 11-5840-340-12

DATE

23 Jan 74

TITLE

Radar Set AN/PSC-76

BE EXACT . PIN-POINT WHERE IT IS

IN THIS SPACE TELL WHAT IS WRONG AND WHAT SHOULD BE DONE ABOUT IT:

PAGE NO	PARA GRAPH	FIGURE NO	TABLE NO.
---------	------------	-----------	-----------

2-25

2-28

Recommend that the installation antenna alignment procedure be changed throughout to specify a 2° IFF antenna lag rather than 1°.

REASON: Experience has shown that with only a 1° lag, the antenna servo system is too sensitive to wind gusting in excess of 20 knots, and has a tendency to rapidly accelerate and decelerate as it hunts, causing strain to the drive train. Hunting is minimized by adjusting the lag to 2° without degradation of operation.

3-10

3-3

3-1

Item 5, Function column. Change "2 db" to "3db."

REASON: The adjustment procedure for the TRANS POWER FAULT indicator calls for a 3 db (500 watts) adjustment to light the TRANS POWER FAULT indicator.

5-6

5-8

Add new step f.1 to read, "Replace cover plate removed in step e.1, above."

REASON: To replace the cover plate.

FO3

Zone C 3. On J1-2, change "+24 VDC to "+5 VDC."

REASON: This is the output line of the 5 VDC power supply. + 24 VDC is the input voltage.

TEAR ALONG DOTTED LINE

TYPED NAME, GRADE OR TITLE, AND TELEPHONE NUMBER

SSG I. M. DeSpiritof 999-1776

SIGN HERE

SSG I. M. DeSpiritof

DA FORM 2028-2 (TEST) 1 AUG 74

P.S.--IF YOUR OUTFIT WANTS TO KNOW ABOUT YOUR MANUAL "FIND" MAKE A CARBON COPY OF THIS AND GIVE IT TO YOUR HEADQUARTERS

HISA 1686-75

RECOMMENDED CHANGES TO EQUIPMENT TECHNICAL MANUALS



THEN JOT DOWN THE DOPE ABOUT IT ON THIS FORM. TEAR IT OUT FOLD IT AND DROP IT IN THE MAIL!

SOMETHING WRONG WITH THIS MANUAL?

FROM (YOUR UNIT'S COMPLETE ADDRESS)

DATE

PUBLICATION NUMBER

DATE

TITLE

BE EXACT PIN-POINT WHERE IT IS

IN THIS SPACE TELL WHAT IS WRONG AND WHAT SHOULD BE DONE ABOUT IT

PAGE NO	PARA GRAPH	FIGURE NO	TABLE NO
---------	------------	-----------	----------

TEAR ALONG DOTTED LINE

TYPED NAME GRADE OR TITLE AND TELEPHONE NUMBER

SIGN HERE

DA FORM 2028-2 (TEST) 1 AUG 74

P S --IF YOUR OUTFIT WANTS TO KNOW ABOUT YOUR MANUAL "FIND." MAKE A CARBON COPY OF THIS AND GIVE IT TO YOUR HEADQUARTERS

FILL IN YOUR
UNIT'S ADDRESS

FOLD BACK

DEPARTMENT OF THE ARMY

OFFICIAL BUSINESS

PENALTY FOR PRIVATE USE \$300

POSTAGE AND FEES PAID
DEPARTMENT OF THE ARMY
DOD-314



Commander
US Army Electronics Command
ATTN DRSEL-MA-Q
Fort Monmouth, New Jersey 07703

FOLD BACK

TEAR ALONG DOTTED LINE

RECOMMENDED CHANGES TO EQUIPMENT TECHNICAL MANUALS



SOMETHING WRONG WITH THIS MANUAL?

THEN JOT DOWN THE DOPE ABOUT IT ON THIS FORM. TEAR IT OUT, FOLD IT AND DROP IT IN THE MAIL!

FROM (YOUR UNIT'S COMPLETE ADDRESS)

DATE

PUBLICATION NUMBER

DATE

TITLE

BE EXACT PIN-POINT WHERE IT IS

IN THIS SPACE TELL WHAT IS WRONG AND WHAT SHOULD BE DONE ABOUT IT

PAGE NO	PARA-GRAPH	FIGURE NO	TABLE NO
---------	------------	-----------	----------

TEAR ALONG DOTTED LINE

TYPED NAME GRADE OR TITLE AND TELEPHONE NUMBER

SIGN HERE

DA FORM 2028-2 (TEST)
1 AUG 74

P S --IF YOUR OUTFIT WANTS TO KNOW ABOUT YOUR MANUAL "FIND." MAKE A CARBON COPY OF THIS AND GIVE IT TO YOUR HEADQUARTERS

FILL IN YOUR
UNIT'S ADDRESS

FOLD BACK

DEPARTMENT OF THE ARMY

POSTAGE AND FEES PAID
DEPARTMENT OF THE ARMY
DOD-314



OFFICIAL BUSINESS

PENALTY FOR PRIVATE USE \$300

Commander
US Army Electronics Command
ATTN. DRSEL-MA-Q
Fort Monmouth, New Jersey 07703

TEAR ALONG DOTTED LINE

FOLD BACK

REVERSE OF DA FORM 2028-2 (TEST)

By Order of the Secretary of the Army:

Official:

PAUL T. SMITH
Major General, United States Army
The Adjutant General

BERNARD W. ROGERS
General, United States Army
Chief of Staff

Distribution

To be distributed in accordance with DA Form 12-36, Direct and General Support maintenance requirements for AN/TAQ-1

DEPARTMENT OF THE ARMY
US ARMY AG PUBLICATIONS CENTER
1655 WOODSON ROAD
ST LOUIS MISSOURI 63114
OFFICIAL BUSINESS
PENALTY FOR PRIVATE USE \$300

POSTAGE AND FEES PAID
DEPARTMENT OF THE ARMY
DOD 314

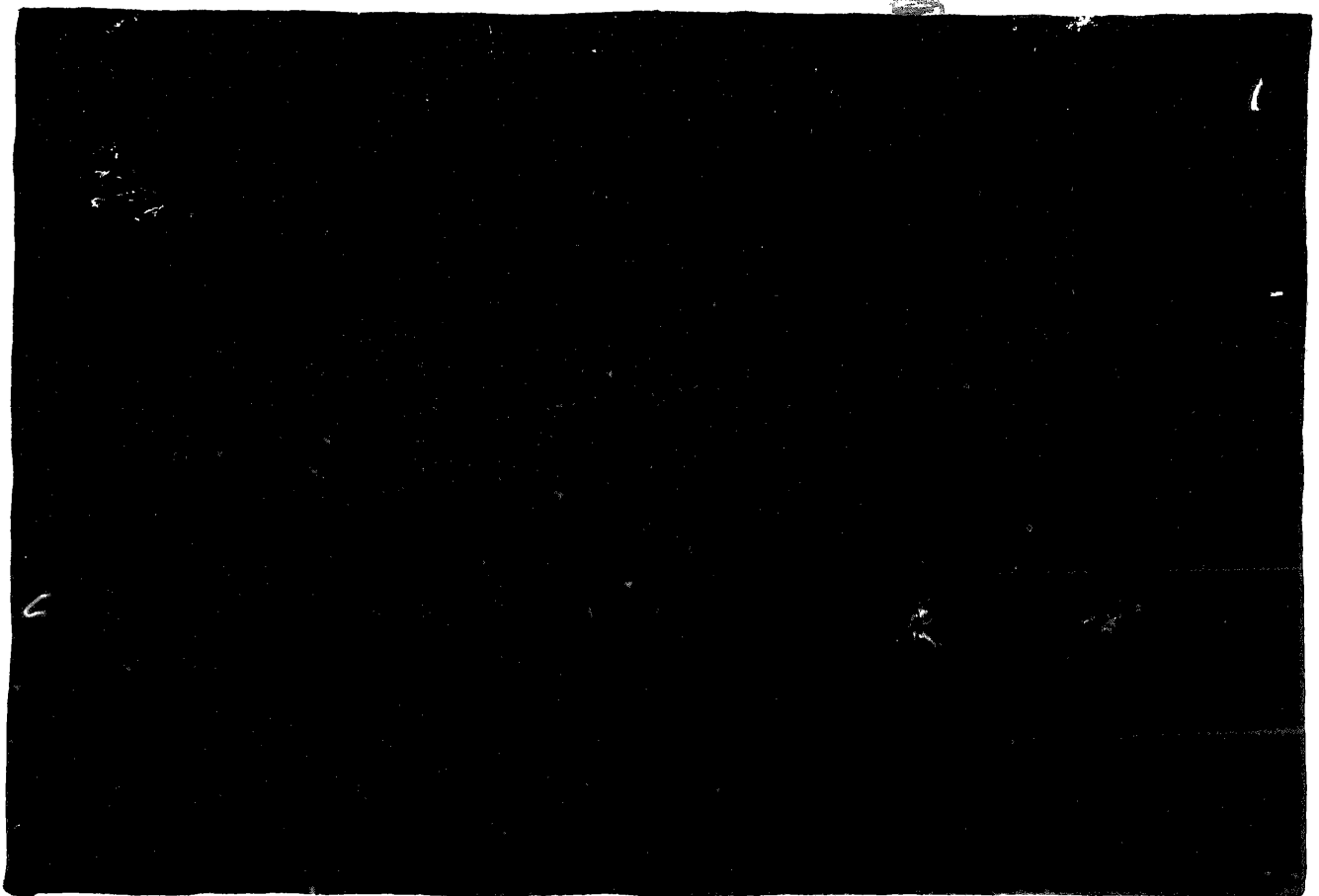


END

03-17-83

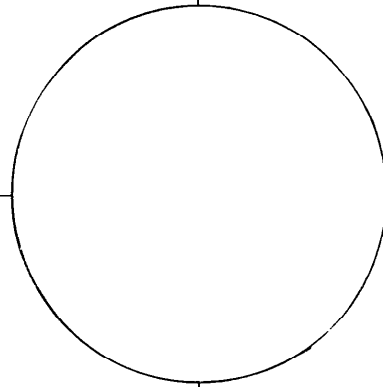
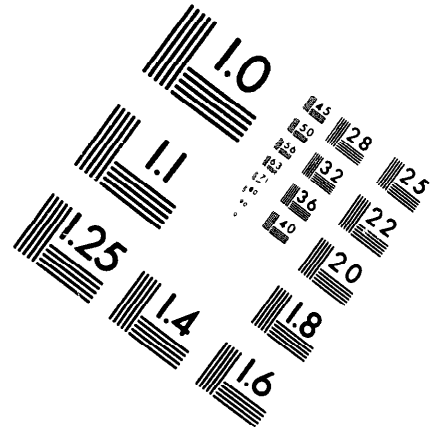
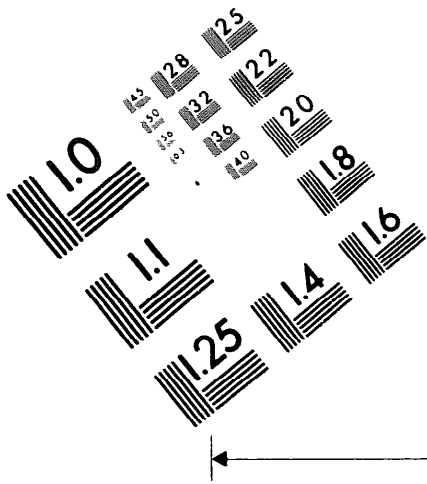
DATE





DEPARTMENT OF THE ARMY

MICROFORM
TEST TARGET



10 mm (e= 81 mm)

ABCDEFGHIJKLMNQRSTUUVWXYZ1234567890
abcdefghijklmnopqrstuvwxyz\$c£/%#½¼¾—=+ x&@*

15 mm (e= 109 mm)

ABCDEFGHIJKLMNQRSTUUVWXYZ1234567890
abcdefghijklmnopqrstuvwxyz\$c£/%#½¼¾—=+ x&@*

20 mm (e= 137 mm)

ABCDEFGHIJKLMNQRSTUUVWXYZ
abcdefghijklmnopqrstuvwxyz
1234567890\$c£/%#½¼¾—=+ x&@*

25 mm (e= 177 mm)

ABCDEFGHIJKLMNQRSTUUVWXYZ
abcdefghijklmnopqrstuvwxyz
1234567890\$c£/%#½¼¾—=+ x&@*

10 mm (e= 81 mm)

ABCDEFGHIJKLMNQRSTUUVWXYZ1234567890
abcdefghijklmnopqrstuvwxyz\$c£/%#½¼¾—=+ x&@*

15 mm (e= 109 mm)

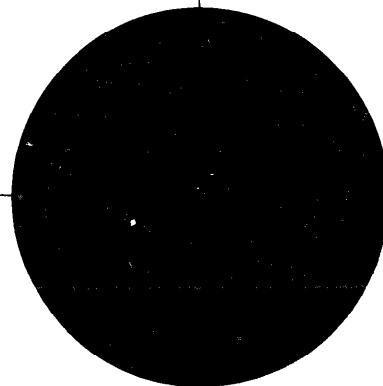
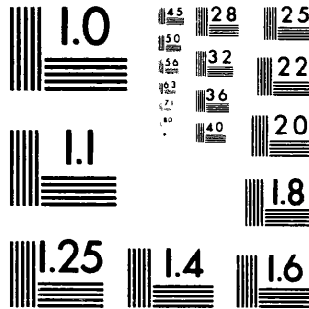
ABCDEFGHIJKLMNQRSTUUVWXYZ1234567890
abcdefghijklmnopqrstuvwxyz\$c£/%#½¼¾—=+ x&@*

20 mm (e= 137 mm)

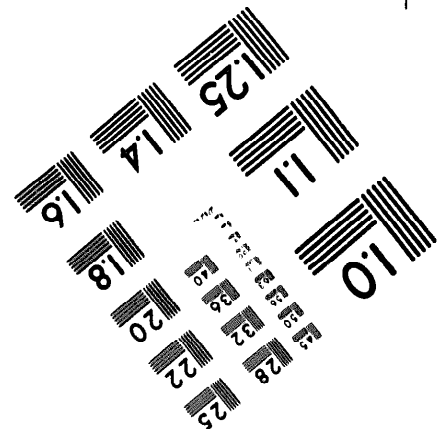
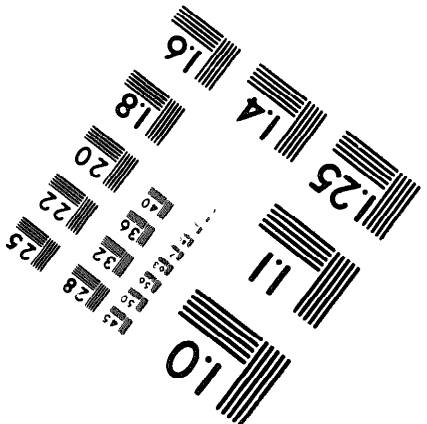
ABCDEFGHIJKLMNQRSTUUVWXYZ
abcdefghijklmnopqrstuvwxyz
1234567890\$c£/%#½¼¾—=+ x&@*

25 mm (e= 177 mm)

ABCDEFGHIJKLMNQRSTUUVWXYZ
abcdefghijklmnopqrstuvwxyz
1234567890\$c£/%#½¼¾—=+ x&@*



200 MM



250 MM

DEPARTMENT OF THE ARMY
US ARMY AG PUBLICATIONS CENTER
1655 WOODSON ROAD
ST LOUIS MISSOURI 63114
OFFICIAL BUSINESS
PENALTY FOR PRIVATE USE \$300

POSTAGE AND FEES PAID
DEPARTMENT OF THE ARMY
DOD 314



END

03-17-83

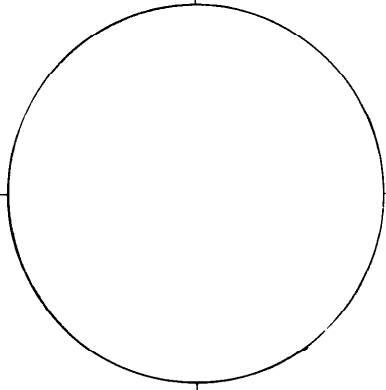
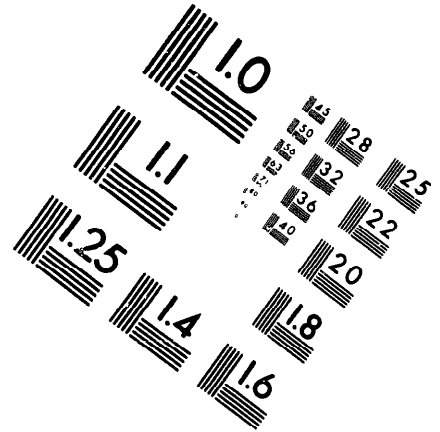
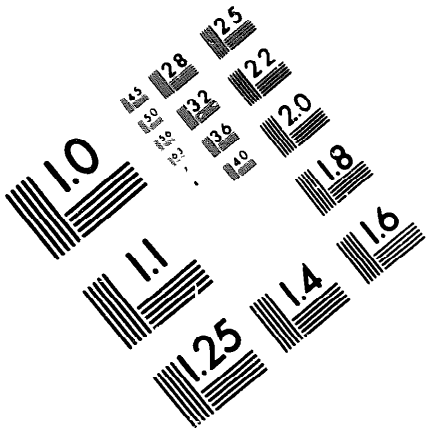
DATE





DEPARTMENT OF THE ARMY

MICROFORM
TEST TARGET



150 MM

1.0 mm (e= 81 mm)

ABCDEFGHIJKLMN**OP**QRSTUVWXYZ1234567890
abcdefghijklmnopqrstu**vwxyz**\$%&/'%# 1/2 1/4 3/4 — = + x & @ *

1.5 mm (e= 1.09 mm)

ABCDEFGHIJKLMN**OP**QRSTUVWXYZ1234567890
abcdefghijklmnopqrstu**vwxyz**\$%&/'%# 1/2 1/4 3/4 — = + x & @ *

2.0 mm (e= 1.37 mm)

ABCDEFGHIJKLMN**OP**QRSTUVWXYZ
abcdefghijklmnopqrstu**vwxyz**
1234567890\$%&/'%# 1/2 1/4 3/4 — = + x & @ *

2.5 mm (e= 1.77 mm)

ABCDEFGHIJKLMN**OP**QRSTUVWXYZ
abcdefghijklmnopqrstu**vwxyz**
1234567890\$%&/'%# 1/2 1/4 3/4 — = + x & @ *

1.0 mm (e= 81 mm)

ABCDEFGHIJKLMN**OP**QRSTUVWXYZ1234567890
abcdefghijklmnopqrstu**vwxyz**\$%&/'%# 1/2 1/4 3/4 — = + x & @ *

1.5 mm (e= 1.09 mm)

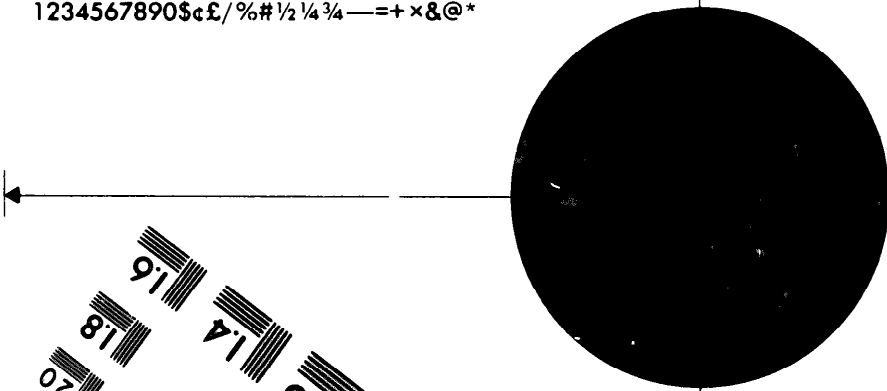
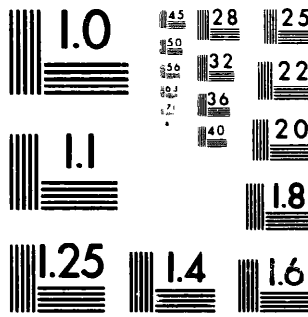
ABCDEFGHIJKLMN**OP**QRSTUVWXYZ1234567890
abcdefghijklmnopqrstu**vwxyz**\$%&/'%# 1/2 1/4 3/4 — = + x & @ *

2.0 mm (e= 1.37 mm)

ABCDEFGHIJKLMN**OP**QRSTUVWXYZ
abcdefghijklmnopqrstu**vwxyz**
1234567890\$%&/'%# 1/2 1/4 3/4 — = + x & @ *

2.5 mm (e= 1.77 mm)

ABCDEFGHIJKLMN**OP**QRSTUVWXYZ
abcdefghijklmnopqrstu**vwxyz**
1234567890\$%&/'%# 1/2 1/4 3/4 — = + x & @ *



200 MM

250 MM

